



Crown Pellet 400

493055

COOKING SYSTEM

- 4097 sq. cm. total cooking surface including porcelain coated warming rack
- 2873 sq. cm. primary cooking surface
- Flav-R-Cast Iron grids
- 2 electronic meat probes
- Equipped with a powerful 2.0 RPM motor and durable auger

DESIGN AND STYLING

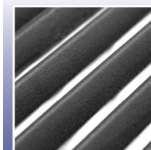
- Agitator and ash cleanout system
- Large diameter stainless steel lid handle with soft touch grip
- 18 lbs hopper capacity with sealed hopper cleanout
- WiFi and bluetooth enabled digital interface with enhanced PID temperature control
- Integrated bottle opener
- 8" wheels and 2 heavy duty leg levellers

DURABILITY

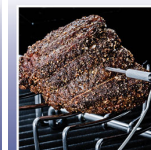
- Quality 1000°F high heat paint - Dragon Black
- Grill body constructed from 1.5 mm thick steel

WARRANTY

- 5 years on steel cookbox
- 2 years on remaining parts and paint



Flav-R-Cast
Iron Grids



Electronic
Meat Probes



Burn Pot
Agitator



Heavy
Duty
Handles



Digital Control
Display with
Smart-Touch System