



## Crown Pellet 500

494055

### COOKING SYSTEM

- 5158 sq. cm. total cooking surface including porcelain coated warming rack
- 3610 sq. cm. primary cooking surface
- Flav-R-Cast Iron grids
- 2 electronic meat probes
- Equipped with a powerful 2.0 RPM motor and durable auger

### DESIGN AND STYLING

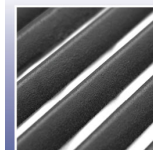
- Agitator and ash cleanout system
- Large diameter stainless steel lid handle with soft touch grip
- 18 lbs hopper capacity with sealed hopper cleanout
- WiFi and bluetooth enabled digital interface with enhanced PID temperature control
- Integrated bottle opener
- 8" wheels and 2 heavy duty leg levellers

### DURABILITY

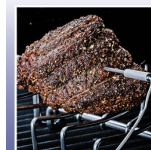
- Quality 1000°F high heat paint - Dragon Black
- Grill body constructed from 1.5 mm thick steel

### WARRANTY

- 5 years on steel cookbox
- 2 years on remaining parts and paint



Flav-R-Cast  
Iron Grills



Electronic  
Meat Probes



Burn Pot  
Agitator



Heavy  
Duty  
Handles



Digital Control  
Display with  
Smart-Touch System